



UNIQUE DESIGN
FOR LAB LIFE
LABOPORT®
VACUUM PUMPS
N 96 · N 820 G · N 840 G



HELLO,
NEW
LABOPORT!

AN EYE FOR DETAIL

RETHINKING EVERYDAY LAB PRACTICE

What aspects do you believe are key when using vacuum pumps in everyday lab practice? What does it take to create simple, economical processes that are reliable day in, day out? And what makes work enjoyable?

These are the questions we used as a guide when redesigning our successful LABOPORT® lab pump series. We became involved in daily lab work, asking users what they wished for, enlisting experts to perform tests and incorporating their suggestions.

The result? Clever, elegant design with clear benefits in terms of handling and functionality.

WE KNOW WHAT COUNTS

UNIQUE DESIGN, EASE OF USE

■ **Exceptionally small footprint**

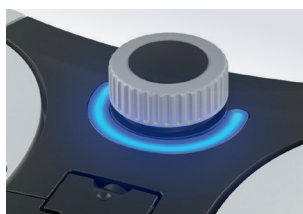
This impressively compact pump provides the user with increased bench space.

■ **Easy to clean**

The smooth surfaces without any ribs or hard edges are easy to keep clean.

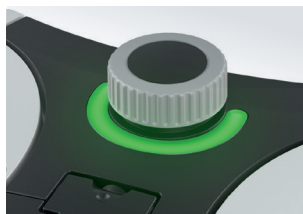
■ **Chemically resistant**

All wetted materials are suited for use with aggressive/corrosive gases.



3-color status display ■
The changing color display allows the operational status to be ascertained at a glance.

Blue: in operation



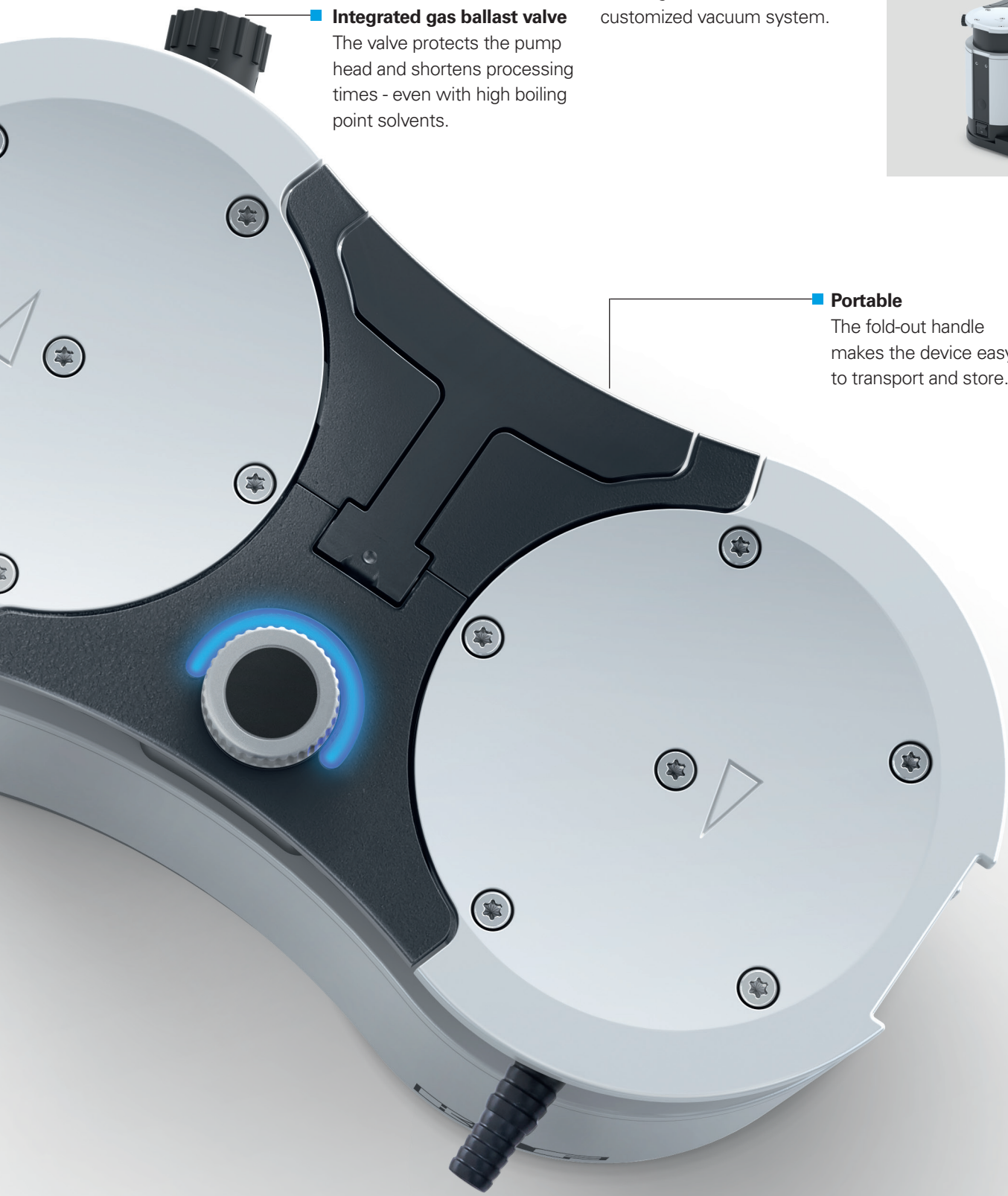
Green: stand-by



Red: error

Speed-controlled ■

Manually adjust the pump speed via the control knob or automatically by connecting to KNF's VC 900 vacuum controller.



■ **Integrated gas ballast valve**
The valve protects the pump head and shortens processing times - even with high boiling point solvents.

■ **Expandable**
Separators and/or condensers can be purchased individually at any time and easily fitted, enabling users to build their own customized vacuum system.



■ **Portable**
The fold-out handle makes the device easy to transport and store.

TECHNICAL DATA

VERSATILITY FOR YOUR LAB



LABOPORT® N 96



LABOPORT® N 820 G



LABOPORT® N 840 G

		LABOPORT® N 96	LABOPORT® N 820 G	LABOPORT® N 840 G
APPLICATION	Rotary evaporation		X	X
	Degassing		X	
	Filtration	X		X
	SPE	X		
	Fluid aspiration	X	X	
	Gel drying		X	
	Centrifugal concentration			X
	Vacuum oven		X	X
TECHNICAL DATA	Flow rate at atm. pressure – l/min (m³/h)	7 (0.4)	20 (1.2)	34 (2.04)
	Ultimate vacuum – torr (mbar abs.)	97.5 (130)	4.5 (6)	4.5 (6)
	Operating pressure – psig (bar)	36.26 (2.5)	1.45 (0.1)	1.45 (0.1)
	Connectors for tube – in.	ID 1/4	ID 3/8	ID 3/8
	Permissible media and ambient temperature – °C (°F)	5 to 40 (41 to 104)	5 to 40 (41 to 104)	5 to 40 (41 to 104)
	Integrated gas ballast valve	No	Yes	Yes
	Integrated rotational speed control	Yes	Yes	Yes
	Weight – lbs. (kg)	2.9 (1.3)	19.4 (8.8)	24.9 (11.3)
	Dimensions W x H x D – in. (mm)	3.0 x 4.7 x 6.2 (75 x 119 x 156)	6.4 x 8.7 x 10.2 (163 x 220 x 259)	7.0 x 9.4 x 11.4 (177 x 240 x 289)
MATERIAL	Pump head	PPS	PTFE	PTFE
	Diaphragm	PTFE-coated	PTFE-coated	PTFE-coated
	Valves	FPM	FFPM	FFPM
ACCESSORIES	Column fixture	Order no. 323484		

CONTACT US

USA, Canada, Mexico

KNF Neuberger, Inc.

Trenton, New Jersey 08691-1810

Tel. +1 609 890 8600

knfusa@knf.com

knf.com

Visit knf.com for a complete list of KNF locations.